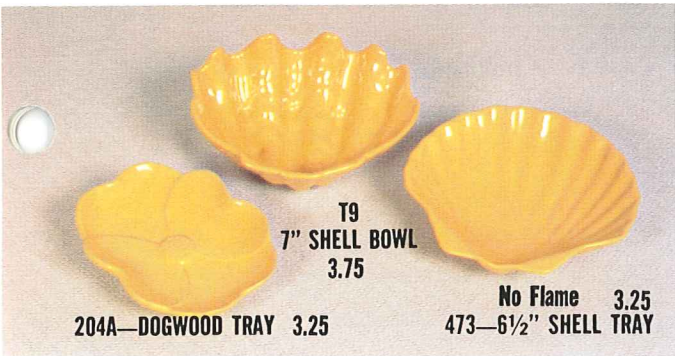


TRAYS SUITABLE FOR RELISH, NUTS, JELLIES, SALADS AND CANDY

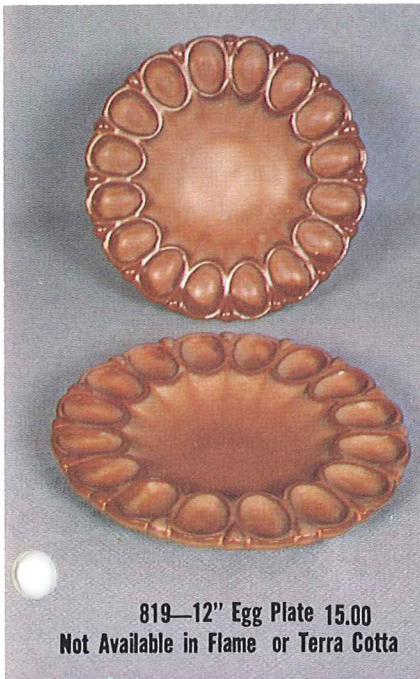
AVAILABLE IN 8 STANDARD COLORS EXCEPT WHERE NOTED



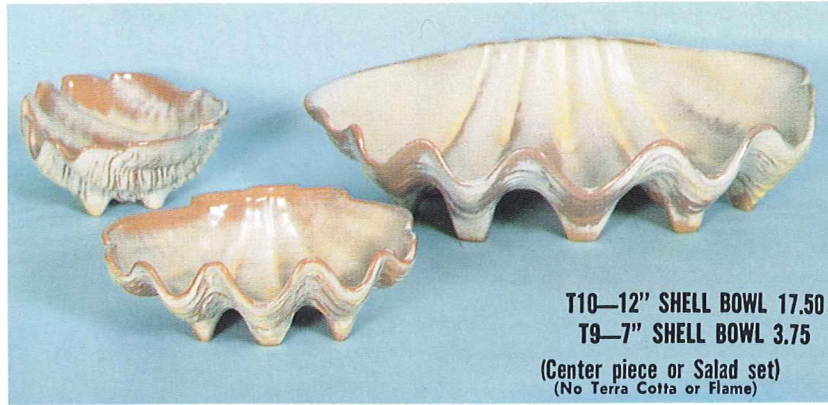
T9
7" SHELL BOWL 3.75
No Flame 3.25
204A—DOGWOOD TRAY 3.25
473—6½" SHELL TRAY



223—6" FOUR LEAF CLOVER 3.50
83—12" Division Relish Dish 6.50
225—7" LEAF TRAY 3.50
Not Available in Flame or Terra Cotta.



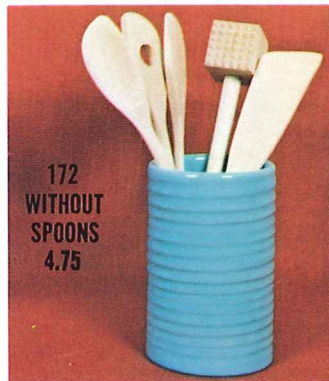
819—12" Egg Plate 15.00
Not Available in Flame or Terra Cotta



T10—12" SHELL BOWL 17.50
T9—7" SHELL BOWL 3.75
(Center piece or Salad set)
(No Terra Cotta or Flame)

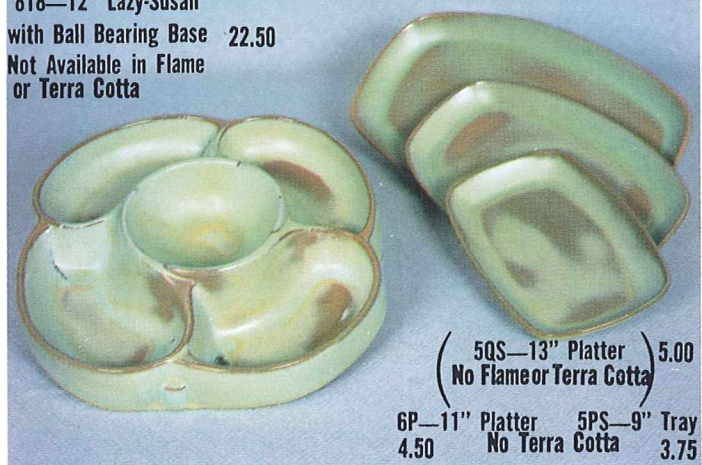


No Terra Cotta
WA1—8" Warmer w/Candle 7.50
WA3—6" Warmer w/Candle 5.00



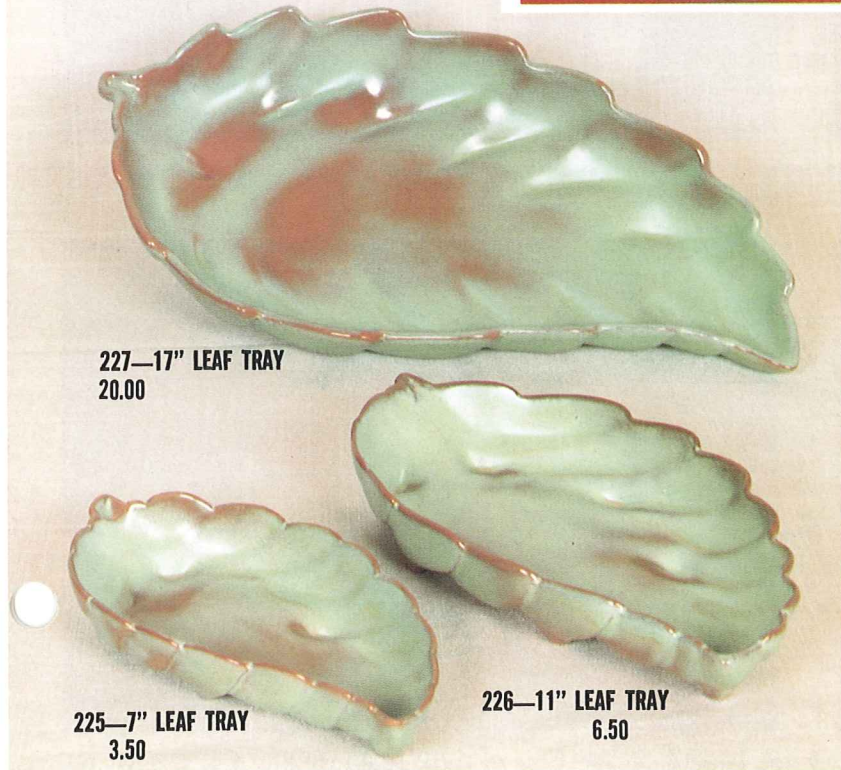
172
WITHOUT
SPOONS
4.75

818—12" Lazy-Susan
with Ball Bearing Base 22.50
Not Available in Flame
or Terra Cotta



5QS—13" Platter (No Flame or Terra Cotta) 5.00
6P—11" Platter 4.50
5PS—9" Tray 3.75
No Terra Cotta

Not Available in Flame or Terra Cotta.



227—17" LEAF TRAY 20.00

225—7" LEAF TRAY 3.50

226—11" LEAF TRAY 6.50



222—12" CORNUCOPIA
No Flame 10.00

57—7" CORNUCOPIA 5.50